



**THE FOND DU LAC
AREA AND
SURROUNDING
COMMUNITIES 2010
RELOCATION PACKAGE**



OFFICE: (920)923-6000
FAX: (920)923-9667
507 FOND DU LAC AVE
FOND DU LAC, WI 54935
WWW.KLAPPERICHREALESTATE.COM



TABLE OF CONTENTS	PAGE NUMBER(S)
COVER	1
TABLE OF CONTENTS	2
WELCOME TO FOND DU LAC	3
DEMOGRAPHICS	4-8
AREA OVERVIEW	8-10
ARTS AND ENTERTAINMENT	11
CHURCH AND WORSHIP	12-14
CLUBS AND ORGANIZATIONS	14-15
DAYCARE, SCHOOLS, AND EDUCATION	16-17
GOVERNMENT	18-19
HEALTHCARE	20
SPORTS AND RECREATION	20-24
TRANSPORTATION	24-26
GEOGRAPHICAL POINTS OF INTEREST	26-27
WISCONSIN HOT SPOTS	27-28
THE BENEFITS OF KLAPPERICH REAL ESTATE, INC.	28-29

If you are currently under representation of another real estate broker please disregard. It is not our intention to solicit those under contract with other brokers. Information in this package is deemed reliable but not guaranteed. Klapperich shall not be held responsible for any discrepancy and will not be liable for any damages of any kind from the use of this package. Klapperich Real Estate, Inc. reserves the right to make changes to this package and these conditions of use at any time.

Copyright 2010, Klapperich Real Estate, Inc. (920) 923-6000. info@klapperichrealestate.com. All rights reserved. No reproduction, distribution, or transmission of the copyrighted material in this package is permitted without the written permission of Klapperich Real Estate, Inc. unless otherwise provided. All photos by Matthew Rodenkrich of the Klapperich Real Estate staff.

Equal Housing Opportunity • Realtor



WELCOME TO FOND DU LAC AND AREA COMMUNITIES!

Located at the base of Wisconsin's Fox Valley and surrounded by host of smaller communities Fond du Lac, WI offers its residents a lifestyle with amenities unlike any other across the entire Midwest. Labeled as an attractive place to live and work the county offers a low crime rate along with a super education program and quality healthcare. Each season is packed with recreation and fun and the festivities are endless.

The Fond du Lac area is the only location in the state within an hour of all four major Wisconsin marketplaces. The majority of the state's favorite shopping malls, business markets, restaurants, recreational areas, sports teams, and various attractions can all be reached in a quick commute. However, the community itself still boasts that Midwestern experience and is physically shadowed by a massive limestone ledge overlooking the east side of Lake Winnebago. The inland lake, the state of Wisconsin's largest, covers 137,708 acres of land and is 28 miles head to toe and 10.5 miles across. Its shorelines can be accessed by the many harbors and shorelines of the county. Recreational activities continue year round and the opportunities are unlimited whether it be windsurfing in the summer or ice fishing through the winter. Golf on a number of scenic private and public golf courses remains a popular activity from early spring through late fall as well.

The county itself is flooded with a host of Community and County parks and the City of Fond du Lac continues to upgrade its 146 acre landscaped park adjacent to the harbor which features a number of lagoons, shorelines, sports facilities, and summertime festivities including Mercury Marine's Annual Walleye Weekend Fishing Tournament which hosts the world's largest fish fry. The Kettle Moraine Forest and marshes of Horicon and Eldorado offer additional places of beauty to camp, hike, fish, hunt, and bike. Snowmobiling and bike trails are boundless and offer both mobility and some of nature's finest offerings.

Welcome to Fond du Lac and the area communities and enjoy!

LOCATION FEATURES:

- Fond du Lac County is the entryway to the Fox River Valley, the fastest growing area in the state.
- It is the only county within an hour commute of four of the state's largest marketplaces.
- More than 50 percent of the state's business activity is conducted within a 60-mile radius.
- Half of the state's 5.5 million residents are within an hour's drive.
- #1 Safest Metro area in the country!

DEMOGRAPHICS

POPULATION

Community	1980	1990	1995	2000	2006	2010*	2015*
Fond du Lac County	88,964	90,083	93,379	97,296	99,243	103,031	105,777
Brandon	862	872	876	912	917	923	927
Campbellsport	1,740	1,732	1,838	1,913	1,965	2,016	2,066
Eden	534	610	625	979	994	772	813
Fond du Lac	35,863	37,755	39,875	42,203	43,577	44,928	46,222
North Fond du Lac	3,844	4,302	4,484	4,557	4,793	5,019	5,239
Oakfield	990	1,003	985	1,012	1,025	744	732
Ripon	7,111	7,241	7,447	7,450	7,612	7,766	7,911
Rosendale	725	777	873	923	981	1,032	1,082
Waupun	8,132	8,844	9,475	10,718	10,691	10,728	10,732

--Wisconsin Dept. of Administration, 8/06, *Projected from 2000 Census

CULTURAL DEMOGRAPHICS

FOND DU LAC COUNTY

Total Population	99,243
White	96.2%
Black or African American	.9%
American Indian or Alaska Native	.4%
Asian	.9%
Hispanic or Latino	2%
Total	100.4%*

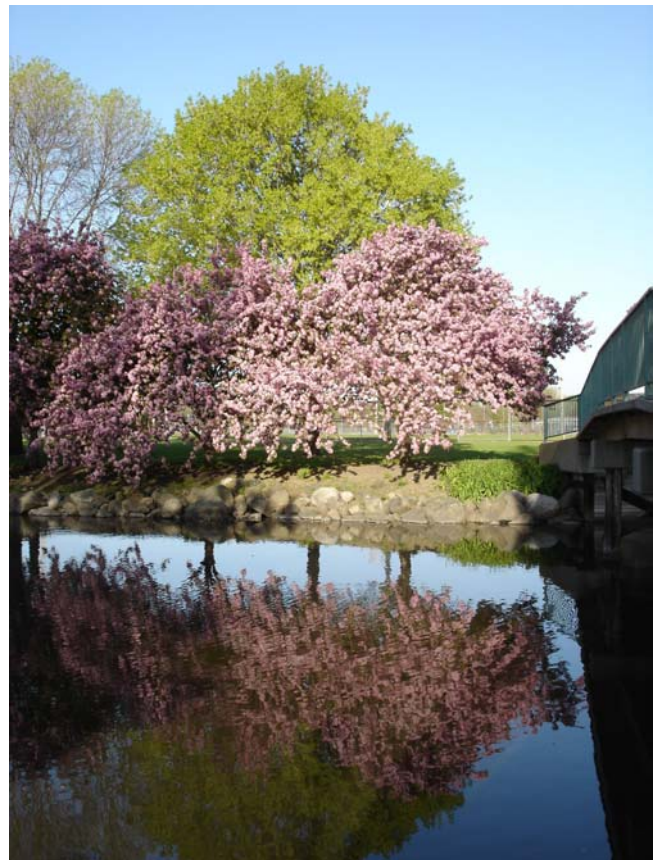
*Note: The number does not total 100 because of persons identifying as two or more races.

--2000 Census

PERCENT OF POPULATION BY AGE GROUP

9 and under	12.8%
10-19	15.6%
20-24	6.2%
25-44	28.8%
45-64	22.4%
65 and over	14.4%

--US Census Bureau, 2000 Census



MEDIAN AGE OF POPULATION

Fond du Lac County: 36.9 years (2000 Census)
 Wisconsin: 37.5 years
 --US Census Bureau, 2004

PERCENTAGE OF HOUSEHOLDS BY FAMILY INCOME

\$20,000-\$34,999	24.7%
\$35,000-\$49,999	22.1%
\$50,000 and over	30.9%

--Sales & Marketing Management magazine, 2000 Survey Buying Power

MEDIAN FAMILY INCOME (FAMILY OF FOUR)

Fond du Lac County: \$49,451
 Wisconsin: \$46,142
 --US Census Bureau State and County Quick Facts

FOND DU LAC COUNTY BUSINESS STATS

Manufacturers shipments, 2000....\$2,472,952,000
 Accommodation and foodservices sales, 2002....\$111,884,000
 Wholesale trade sales, 2002....\$814,763,000
 Retail sales, 2002....\$1,028,966,000
 Retail sales per capita, 2002....\$10,519
 Building permits, 2005....618
 Valuation of building permits, 2005....\$87,827,000
 Farm land, 2002 (acres)....344,286
 Federal spending, 2004....\$443,387,000
 Federal spending per capita, 2004....\$4,494
 --Fedstats.gov



PERSONAL PER CAPITA INCOME (2004)

Fond du Lac County: \$31,366
 Wisconsin: \$30,685
 --Fedstats.gov

HOUSING (2005)

Cost of Living Comparison

Median House Value (Fond du Lac County): \$124,600
 Median House Value (Wisconsin): \$152,600
 Median House Value (U.S.): \$167,500
 -- US Census Bureau, 2005 American Community Survey

PROPERTY TAXES (2002)

Community	Rate per \$1000	Aggregate Ratio
Brandon	21.73	0.9928
Campbellsport	22.30	0.9102
Eden	17.10	0.8237
Fond du Lac	20.25	1.0099
Mount Calvary	13.06	0.9731

North Fond du Lac	21.82	0.9366
Oakfield	27.10	0.8604
Ripon	24.67	0.8826
Rosendale	21.88	0.8277
Saint Cloud	17.37	0.9775
Waupun (Dodge County)	20.69	(unavailable)
Waupun (FdL County)	19.69	0.9963

Source: FDL and Dodge County Treasurer

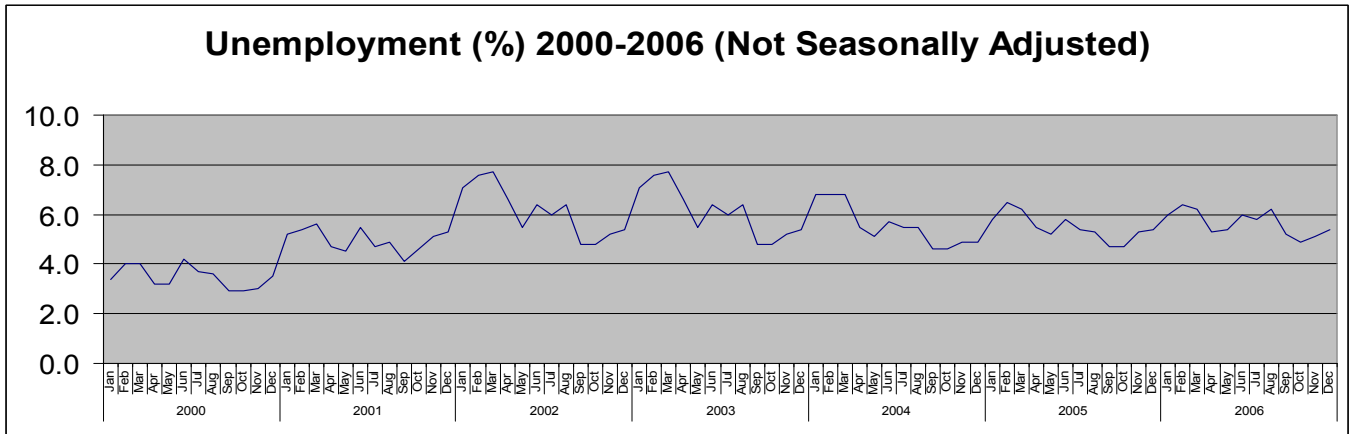
WORKFORCE BREAKDOWN (2001)

27 percent of the local workforce is employed in manufacturing
 25 percent of the local workforce is employed in services
 19 percent of the local workforce is employed in retail

MEAN TRAVEL TIME TO WORK (2000)

Fond du Lac Co.: 18.7 Minutes
 Wisconsin: 20.8 Minutes
 Note: For workers age 16+
 Source: fedstats.gov

MONTHLY UNEMPLOYMENT



Source: Dept. Workforce Development/Office Economic Advisors



FOND DU LAC COUNTY WAGE RATES

(40 hour work week)

All Occupations	\$16.58
Administrative Support	8.75
Arts, design, entertainment, sports, and media occupations	\$18.84
Building and grounds cleaning and maintenance occupations	\$10.52
Business and financial operations occupations	\$21.39
Community and social services occupations	\$18.79
Computer and mathematical occupations	\$27.33
Construction and extraction occupations	\$20.06
Education, training, and library occupations	\$22.24
Food preparation and serving related occupations	\$8.64
Healthcare practitioners and technical occupations	\$26.41
Healthcare support occupations	\$11.72
Installation, maintenance, and repair occupations	\$18.17
Legal occupations	\$34.95
Life, physical, and social science occupations	\$25.31
Management occupations	\$37.29
Office and administrative support occupations	\$13.41
Personal care and service occupations	\$9.62
Production occupations	\$16.50
Protective service occupations	\$18.86
Sales and related occupations	\$14.03
Transportation and material moving occupations	\$12.99

-2006 Wisconsin Wage Survey, WI Dept. of Workforce

Development Wisconsin Dept. of Workforce Development

TOP 10 INDUSTRIES IN FOND DU LAC COUNTY

Industry	Establishments	Employees
Machinery Manufacturing	22	4,894
Educational Services	23	3,868
Food Services & Drinking Places	166	3,651
Food Manufacturing	20	1,924
Executive, Legislative, Gov.	32	1,770
Hospitals	N/A	N/A

Specialty Trade Contractors	167	1,515
Ambulatory Health Care	102	1,434
Nursing & Residential Health Care	102	1,304
General Merchandise Stores	N/A	N/A

** November 2004, Department of Workforce Development Bureau of Workforce Information*

TOP 10 EMPLOYERS IN FOND DU LAC COUNTY

Employer	Product	Employees
Mercury Marine	Marine Motors	999+
Intl. Paper Co. (FDL Container)	Box Manufacturing	999+
Agnesian Health Care	Healthcare	999+
Fond du Lac School District	Education	999+
County of Fond du Lac	Government	999+
Alliance Laundry Systems	Laundry Equipment Manufacturing	500-999
Moraine Park Technical College	Education	500-999
J F Ahern	Mechanical Contractor	500-999
Charter Communication	Cable/Phone Services	500-999
Ultra Mart Foods Inc.	Retail Bakeries	250-499

**November 2004, Department of Workforce Development Bureau of Workforce Information*

AGRICULTURE OVERVIEW

Agriculture has a substantial impact on the economy of both Fond du Lac County and the City of Fond du Lac. More than 4,000 jobs depend directly on the county's agriculture and agricultural production.

The county's 1,790 working farms (at an average size of 218 acres) account for more than \$151 million in commodity sales annually, placing Fond du Lac County sixth in the state among the 72 counties. The farms are first in the state in production of winter wheat and fourth in production of sweet corn. The county is sixth in Wisconsin in the production of corn silage and alfalfa for hay and is tenth in oats for grain and soybeans.

Fond du Lac County's 583 dairy farms have a total of 40,200 cows. Collectively, these dairy farms rank seventh in Wisconsin in milk production. *Fond du Lac Association of Commerce/VillageProfile.com*



EDUCATION OVERVIEW

Marian College, Fond du Lac

A four-year liberal arts college, the Catholic, coeducational institution is sponsored by the Congregation of the Sisters of Saint Agnes and offers both bachelor and master degrees.

Enrollment (2006-2007): 1,226 full-time undergraduate students.



A Continuing Education Program is designed for adults who have at least 30 credits of college work and wish to achieve a bachelor's degree. An evening/weekend college offers courses scheduled in the evenings and weekends in liberal arts and electives.

Contact Marian College Admissions at (920) 923-7650.

www.mariancollege.edu

Moraine Park Technical College, Fond du Lac

MPTC provides technical and workplace skills training.

Enrollment (2004-2005): 23,191 full-time equivalents

MPTC offers 10 different degree programs on an extended part-time basis for working adults. Classes are offered in late afternoon, in the evenings, on weekends, over the television, and via a variety of independent study options.

The Supervisors Management and Business-to-Business Marketing programs are offered in an accelerated format to allow working adults to get their degrees quickly while still maintaining their employment. Accelerated programs and certificate programs also are available.

Contact MPTC Admissions at (920) 924-3408.

www.morainepark.edu

Ripon College, Ripon

Ripon College is a four-year private college, committed to providing a personal, traditional, residential and liberal arts education.

Enrollment (Fall 2007): 1,000 students.

The educational focus is on thinking critically, speaking convincingly, writing clearly and using modern technology.

Contact Ripon College at (800) 94-RIPON.

www.ripon.edu/

University of Wisconsin, Fond du Lac

A two-year liberal arts university provides a general education program for transferring to a four-year college. UW-Fond du Lac offers some four-year programs.

Enrollment Headcount (Fall 2006-07): 9,849

Evening courses and independent study programs are available for adult workers.

Contact UW-Center Admissions at (920) 929-3606.

www.fonddulac.uwc.edu

University of Wisconsin, Oshkosh

A four-year coeducational, college connected with the University of Wisconsin System is located in Oshkosh, 20



minutes north of Fond du Lac via Highway 41 or Hwy 45 along Lake Winnebago.

Enrollment Headcount (Fall 2006-07): 12,530

Courses available in the College of Education/Human Services, Business Administration, Nursing and Letters/Sciences.

Contact the UW-Oshkosh Registrar's Office at (920) 424-3454

www.uwosh.edu

HEALTH CARE OVERVIEW

Agnesian HealthCare, Fond du Lac

The 191-bed facility offers acute short-term general health care. Emergency physician services and complete diagnostic, therapeutic and support services are available.

Medical staff: 136 physicians representing 31 different medical specialties.

Aurora Health Center, Fond du Lac

The facility encompasses doctors' offices, a walk-in clinic for urgent care, occupational health services, a laboratory, a pharmacy, a state-of-the-art diagnostic department, a dialysis center and an ambulatory surgery center. Specialties include OB/GYN, internal medicine, cardiology, nephrology, pediatrics, ENT, general surgery, orthopedics, plastic surgery and occupational health.

Ripon Medical Center, Ripon

Professional health care services are provided by Ripon Medical Center at its 40-bed Ripon Memorial Hospital. The hospital staff consists of a full-range of specialty services with nine family physicians with a focus on family-centered, personalized care.

Ripon Medical Center has 190 employees.

Waupun Memorial Hospital, Waupun

Waupun Memorial is a 70-bed, general, acute care hospital. The region's only Renal Dialysis Center is based here, offering artificial kidney services on a daily basis. Rehabilitation therapy, a wide range of diagnostic services, elderly care and 24-hour emergency room services are available.

The medical staff includes 11 active physicians, plus many consulting staff members.



-----CONTACT INFORMATION-----

ARTS AND ENTERTAINMENT

ARTS

Bravo Children's Productions	920-907-8000
Fond du Lac Concert Association	www.fdlconcert.com
Fond du Lac Community Theatre	920-923-2206, www.fdlct.com
Fond du Lac Symphonic Band	907-7678, www.fdsymphonicband.org
Windhover Center for the Arts	921-5410, www.windhovercenter.com
Fondy Acoustic Music Alliance	923-0662, www.fondyacoustic.org
Fond du Lac Movie Theatre	907-0954
Fond du Lac Public Library	929-7080, www.fdlpl.org
Fond du Lac Festivals, Inc.	923-6555, www.fdlfest.com
North Fond du Lac Public Library	929-3771, www.northfonddulaclibrary.org
UW-Fond du Lac Prairie Theater	906-6350, www.fonddulac.uwc.edu/com_resources/uwfdl_theater_department.html
Gallery and Frame Shop	921-1144, www.dotnet.com/~buyart/gallery.htm
Marlene's Silver Wheel Manor Museum and Shoppes	922-1608, www.marlenesheirlooms.com/silver.html

SHOPPING

Bayshore Mall	Milwaukee
Brookfield Square	Brookfield
City Center Plaza	Appleton
Eastowne	Madison
Forest Mall	Fond du Lac
Fox River Mall	Appleton
Grand Ave Mall	Milwaukee
Hilldale	Madison
Mayfair Mall	Milwaukee
Northland Mall	Appleton
Northridge Mall	Milwaukee

Prime Outlet Center	Oshkosh
Southridge Mall	Greendale
Westgate	Madison
Westowne	Madison



CHURCH & WORSHIP

APOSTOLIC

Apostolic Christian Church	W5324 Pioneer Rd.	923-3728
Cornerstone Worship Center	240 N National Av	923-4442, www.cornerstonefdl.com

ASSEMBLIES OF GOD

Assembly of God	825 Fond du Lac Av.	922-3990
Lighthouse Christian	401 S. National Av.	921-3477, www.lcconline.com

BAPTIST

First Baptist Church	721 E. Scott St.	922-1945
Memorial Baptist	645 Forest Ave.	922-2360, www.mbcfdl.org
Community Church	N6717 Streblov Dr.	922-1477, www.cfdl.org
Trinity Baptist	400 E. Johnson St.	922-9044, www.trinityfdl.net

CATHOLIC

Holy Family Catholic	471 Fourth St. Way	921-0580, www.hffdl.org
Holy Cross Church	308 S Hwy W	753-3311
Our Risen Savior	W8272 Forest Ave	922-2412
Presentation Parish	705 Michigan Ave.	921-9383
St. Joseph's	83 E. 2 nd St.	921-0454, www.hffdl.org
St Mary's Church	93 Marquette St.	921-1311, www.hffdl.org
Sacred Heart	232 S. Peters Ave.	921-8831, www.hffdl.org

CHRISTIAN SCIENCE

First Church of Christ	593 E. Johnson St.	921-8525
------------------------	--------------------	----------

CHURCH OF CHRIST

Church of Christ 747 E. Scott St. 922-0300, www.fondulacchurch.com

CHURCH OF JESUS CHRIST OF LATTER DAY SAINTS

Church of Jesus Christ 347 Country Ln. 924-7427

EPISCOPAL

St. Paul’s Cathedral 51 W. Division St. 921-3363, www.saintpaulsepiscopalcathedral.org

GREEK ORTHODOX

Holy Trinity 198 N. Macy St. 921-4364, www.holytrinityfdl.com

INDEPENDENT

Calvary Bible 70 E. Pioneer Rd. 921-0530

INTERDENOMINATIONAL

Grace Christian 1596 4th St. 923-5292

JEHOVAH’S WITNESSES

Jehovah’s Witness 570 Marshall Ave. 921-6472

LUTHERAN

Ascension 901 Cty Tk V 922-3353, www.ascensionfdl.org
 Church of Our Savior 363 S. Main St. 922-0020, www.oursavioursfdl.org
 Divine Savior (MS) 1081 Prospect Ave 923-1532, divinesavior-nfdl.org
 Hope Lutheran (MS) 260 Vincent St. 922-5130, www.lifeathope.org
 Immanuel Trinity 40 E. Division St. 921-4545, www.immanueltrinity.org
 Luther Memorial 134 21st 922-7421
 St. Paul’s (WI) 1010 Adams Ave. 922-1080, www.stpaulslutherannfdl.com
 Faith Lutheran(WI) 55 N. Prairie Rd. 922-3530, www.faithlutheranfdl.org
 Good Shepard 855 Martin Ave. 921-8500
 Redeemer (WI) 606 Forest Ave. 921-4020, www.redeemerfdl.org
 St. Peter’s (WI) 54 E. 1st St. 921-8075, www.stpetersfdl.net
 Zion EV Lutheran W6852 Main 688-5518





NON-DENOMINATIONAL

Calvary Mission Ctr. 271 N. Park Ave. 923-5909
Church of Christ 747 E. Scott 922-0300
Bread of Life Family Worship 131 S. Main St. 273-0090, www.breadoflife2000.org

PENTECOSTAL

Apostolic Christian W5324 E Pioneer Rd 923-3728
Friendly Church of God 402 E. 9th St. 923-9222

PRESBYTERIAN

First Presbyterian 1225 4th St. 922-0425, www.fdlpresbyterian.org

REFORMED

Grace Reformed 163 18th St. 922-7211, www.gracechurchfdl.org

SALVATION ARMY

Salvation Army 237 N. Macy St. 923-8220, www.safonddulac.org

UNITED CHURCH OF CHRIST

Bethel United Church of Christ N4540 Cty Rd K 923-1881
Church of Peace 158 S. Military Rd. 921-8215,
www.uccwebsites.net/churchofpeacefonddulacwi.html
Pilgrim United Church of Christ 535 Stow St. 921-0415, www.pilgrimuccfdl.org

UNITED METHODIST

Community United Methodist 701 Minnesota Ave. 921-5567
Covenant United 20 N. Marr St. 921-4949, www.wisconsinumc.org/covenantUMC
Salem United 120 Sheboygan St. 921-8605, www.salemchurch.com

UNITED PENTECOSTAL

Cornerstone Worship 240 N National Ave 923-4442, www.cornerstonefdl.com

CLUBS AND ORGANIZATIONS

4-H County Leaders Association	583-4404
AARP	923-3548
ADVOCAP	922-7760
Altrusa Internation of Fond du Lac	921-2521
Amateur Radio Club	907-0850
American Association of University Women	923-1425
American Legion Trier-Puddy Post #75	922-3683
American Red Cross	922-3450
ARC of Fond du Lac	923-3810
ASTOP	926-5395
Audubon Society	923-2490
Big Brothers, Big Sisters	922-8200
Blueline Family Ice Center	923-1805
Boy Scouts of America	1-800-SCOUTS
Boys and Girls Club	924-0530
Catholic War Veterans	922-4058
Charity Club	921-5168
Children's Museum of Fond du Lac	929-0707
Concerned Citizens of Fond du Lac	923-1050
Eagles Club	921-2705
Elks Club	922-5757
Exchange Club	929-0184
Family Resource Center of Fond du Lac Co.	923-1499
Flying Geese Quilt Guild	924-4440
Fond de Vettes	923-2883
Fond du Lac #26 Free & Accepted Masons	921-3416
Fond du Lac Aquatic Center	929-3536
Fond du Lac Area Foundation	921-2215
Fond du Lac Area United Way	921-7010
Fond du Lac Area Writer's Club	923-9244
Fond du Lac Artists Association	979-7080, ext 141
Fond du Lac Arts Council	921-5410
Fond du Lac BMX Club	602-0652
Fond du Lac Booster Club	921-8636





Fond du Lac Chamber of Commerce	921-9500
Fond du Lac Co. Advocates	923-5774
Fond du Lac Co. Foster Parents Association	922-9627
Fond du Lac Co. Historical Society	922-1166
Fond du Lac Co. REACT #4364	923-4291
Fond du Lac Co. Snowmobile Association	923-1297
Fond du Lac Coin Club	922-9542
Fond du Lac Community Theatre	923-2206
Fond du Lac Concert Association	926-0687
Fond du Lac Convention and Visitors Bureau	923-3010
Fond du Lac Economic Development Corp	929-2928
Fond du Lac Education Association	923-2493
Fond du Lac Festivals, Inc.	923-6555
Fond du Lac Humane Society	922-8873
Fond du Lac Ice Yachters Club	921-5087
Fond du Lac Jaycees	PO Box 1374, 54936-1374
Fond du Lac Judo Club	922-2836
Fond du Lac Literacy Services	921-1907
Fond du Lac Master Gardeners Association	477-4091
Fond du Lac Racquet & Fitness	929-9150
Fond du Lac Rotary Club – Morning	922-5503
Fond du Lac Rotary Club – Noon	922-9139
Fond du Lac Running Club	921-0793
Fond du Lac Sailing Club	921-8152
Fond du Lac Shrine Club	921-3416
Fond du Lac Skyport	922-6000
Fond du Lac Soccer Association	923-5596
Fond du Lac Society Of Model RR Hobbyists	921-1189
Fond du Lac Softball	921-8964
Fond du Lac Stamp Club	9218366
Fond du Lac Symphonic Band	907-7678
Fond du Lac Theatre	907-0954
Fond du Lac Toastmasters #498	922-8426
Fond du Lac Women’s Chorus	921-6159
Fond du Lac Women’s Club	921-2889

Fond du Lac Yacht Club	922-4677
Fond du Lac-YMCA	921-3330
Fondy Vintage Auto Club	921-5621
Free Spirit Riders	924-8608
Friends Aware of Violent Relationships (FAVR)	923-1743
Genealogical Society	922-1680
Girl Scouts – Manitou Council	565-4395
Habitat for Humanity	921-6623
Home Builders Association	922-9067
Horicon Marsh Bird Club	485-2936
Izaak Walton Conservation Club	922-9372
Kiwanis Club of Fabulous Fond du Lac	923-3404
Kiwanis Club of FdL – Noon	921-7171
Kiwanis Sunrisers	929-9699
Kiwanis-Lakeside Evening	921-0800
Knights of Columbus	921-1290
Knights of Columbus	921-1290
Lakeside Investors Club	923-0238
League of Women Voters of Fond du Lac	922-0546
Lighthouse Anglers	923-5885
Lioness	921-4954
Lions Club – FdL Evening	922-4225
Marine Corps League	922-4990
MOMS Club of Fond du Lac	888-249-6444
Mt. Calvary Athletic Club	753-5626
Optimist Club – Evening	922-3329
Optimist Club – Noon	922-2784
Optimist Club – Twilight	924-7967
Salvation Army	923-8220
Service League	322-9010
Share Program	926-0478
SIGMA	921-2467
Soroptimist International of Fond du Lac	923-6310
St. Agnes Hospital Foundation	926-4959
Sunset Stitchers Quilt Guild	924-5299



The Farmer's Market	921-9500
Triad	922-9057
US Coast Guard Auxiliary	921-7770
Volunteer Center of Fond du Lac Co.	926-1414
Windhover Center for the Arts	921-5410
Women in Management	http://www.wimifdl.com

DAYCARE, SCHOOLS AND EDUCATION

www.fonddulac.k12.wi.us

www.faces.k12.wi.us

DAYCARE

Camelot Children's Center 101 Camelot Dr.	922-9442
Christian Parents for Kids N7626 Hwy 149	923-1500
Cobblestone Learning Center 784 S. Main St.	929-8688
Daily Rainbow Home Child Care 15 S. Pioneer Pkwy	921-7230
Head Start-Advocap 19 W. 1 st St.	922-7760
Kidz Choice Learning Center 574 Prairie Rd	924-3593
Kuddles College 848 Military Road	923-0106
Mary Linsmeier Schools 103 W. Scott St	923-6989
Moraine Park Tiny Tech 235 N National Ave	929-2472
Playhouse for the Precious 302 Prospect Ave., NFDL	924-9888
Salvation Army 237 N Macy St.	923-8220
Southtown Children's Center 784 S. Main	929-8688
YMCA 90 W 2 nd St.	921-3698

PRE-SCHOOL/KINDERGARTEN

ARC Park	500 N. Park Ave	923-1495
Best Buddies	183 W. Scott St.	922-4660
Divine Savior Lutheran	1081 Prospect Ave.	923-1532
Happy FACES	678 Western Ave.	922-0537
Head Start-Advocap	19 W. 1 st St.	922-7760
Heritage Pre-School	163 18 th St.	922-7737
Hope Pre-School	260 Vincent St.	922-5130
Jesus' Little Lambs	855 Martin Ave.	921-8500
Kids Connection	923 Minnesota, NFDL	906-9669





Lighthouse Kiddie Kampus 848 4th St. 922-6777
Lollipop Park Learning Center, Inc. 363 S. Main St. 923-5750
Mary Linsmeier Schools 103 W. Scott St. 923-6989
Moraine Park Tiny Tech 235 N. National Ave. 929-2472

ELEMENTARY

Chegwin Elementary (K-6) 109 E. Merrill Ave. 929-2820
Evans Elementary (K-6) 140 S. Peters Ave 929-2828
Fahey Elementary (Sp. Ed.) 247 Doty St. 929-2890
Faith Lutheran (K-8) 55 N. Prairie Rd. 923-6313
Fond du Lac Christian School 720 Rienzi Rd. 924-2177
Friendship Learning Center 1115 Thurke Av., NFDL 929-3757, www.theclassList.com
James Otis School N6104 Esterbrook Road 929-6995
Lakeshore Elementary (K-6) 706 Prairie Rd 929-2901
Lighthouse Christian Acad. 401 S. National Av. 921-7785
Luther Memorial School (K-8) 134 21st St. 922-7421
Parkside Elementary (K-6) 475 W. Arndt St. 929-2840
Pier Elementary (K-6) 259 Old Pioneer Rd. 929-2868
Presentation 706 Minnesota, NFDL 921-5873
Redeemer Lutheran (K-8) 606 Forest Ave. 921-4020
Riverside Elementary (K-6) 396 Linden St. 929-2880
Roberts Elementary (K-6) 270 Candy Ln. 929-2835
Rosenow Elementary (K-6) 290 Weis Ave. 929-2996
St. Mary's Middle School 63 E. Merrill 924-6185
St. Patrick's Elementary (3-5) 37 E. Follett St. 921-6710
St. Paul's Lutheran (K-8) 1010 Adams Ave., NFDL 924-9699
St. Peter's Lutheran (K-8) 35 E. 2nd St. 922-1160
Waters Elementary (K-6) 495 Wabash Ave. 929-2845

JR. HIGH & MIDDLE SCHOOLS

Bessie Allen (6-8) 305 McKinley., NFDL 929-3754, www.theclassList.com
Sabish Jr. High (7-9) 100 N. Peters Ave. 929-2800
St. Mary's Middle School (6-8) 63 E. Merrill 924-6185
Theisen Jr. High (7-9) 525 E. Pioneer Rd. 929-2850
Woodworth Jr. High (7-9) 101 Morningside Dr. 929-6900

HIGH SCHOOLS

Fond du Lac High School (9-12) 801 Campus Dr 929-2740
 Horace Mann High (9-12) 325 McKinley St., NFDL 929-3740, www.theclist.com
 St. Mary Springs High (9-12) 255 Cty Rd. K 921-4870, www.smshs.com
 Winnebago Lutheran Acad (9-12) 475 E. Merrill Av 921-4930, www.wlavikings.org

COLLEGES

Marian College 45 S. National Av. 923-7600, www.mariancollege.edu
 Moraine Park Technical College, 235 N National Av. 922-8611, www.morainepark.edu
 Ripon College 300 Seward St. 748-8337, www.ripon.edu
 UW-Fond du Lac 400 University Drive 929-3600, www.fonddulac.uwc.edu
 UW-Oshkosh 424-3227, www.uwosh.edu

GOVERNMENT

CITY OF FOND DU LAC - WWW.CI.FOND-DU-LAC.WI.US

Area Transit	322-3650
Assessment	322-3410
Attorney	322-3420
Building Inspector	322-3570
Central Collection	322-3460
City Manager	322-3405
Clerk	322-3430
Clerk of Courts	929-3038
Community Development	322-3440
Comptroller	322-3450
Engineering	322-3470
Fire Department	322-3800
Health Inspections	929-3275
Housing Authority	929-7093
Library	929-7080
Parking Meter Utility	322-3448
Parks/Lakeside Park Office	322-3590
Planning	322-3440
Police Department	322-3700
Public Works	322-3540



Purchasing	322-3450
Refuse & Garbage Collection	322-3540
Senior Center	322-3630
Wastewater Treatment	322-3680
Water Utility	322-3680

COUNTY OF FOND DU LAC - www.co.fond-du-lac.wi.us

Administrative Offices	929-3150
Airport	926-0653
Child Support/Enforcement	929-3057
Child Support/New Cases	929-3305
Code Enforcement	929-3139
Community Programs	929-3500
County Clerk	929-3000
Clerk of Courts	929-3038
District Attorney	929-3048
Emergency Government	929-2911
Fairgrounds Park	929-3169
Fairgrounds Park Pool	923-0275
Family Court Commissioner	929-3075
Family Court Services	929-3404
Health Care Center	929-3500
Health Department	929-3085
Highway Department	929-3485
Housing Authority	929-3107
Land and Water Conservation	923-5562
Medical Examiner	929-3366
Parks Department	929-2135
Parks Department/ Waupun	324-2769
Planning & Zoning	929-3135
Register of Deeds	929-3018
Senior Services	929-3114
Sheriff's Department	929-3391
Social Services	929-3400
Surveyor	929-3165





Tax Listing	929-3027
Treasurer's Office	929-3010
TDD Services	929-3443
Veterans Service Office	929-3117
WIC-Nutrition Program	929-3104

HEALTH CARE

HOSPITALS

St. Agnes Hospital	430 E. Division St.	929-2300
(Agnesian Healthcare)		
Fond du Lac Surgery Center	421 Camelot Drive	926-5900
Mercy Medical Center	500 S. Oakwood Road	223-2000

MEDICAL CLINICS

Agnesian Convenient Care Clinic	145 N. Main St.	926-8492
Aurora Health Center	210 Wisconsin American Dr.	907-7000
Aurora Health Center	700 Park Ridge Lane	923-7800
FDL Regional Clinic	420 E. Division St.	923-7400
FMC Dialysis Center	1109 W. Fond du Lac St	748-8651
FDL Dialysis Center	101 S. Pioneer Road	923-2333
Fox Valley Wellness Center	180 Knight's Way	922-5433
Family Medical Center	N5840 Hickory St.	929-7490
Lifecare Practitioners Inc	481 E. Division St	929-8120
Mercury Marine		
Radiology Fond du Lac	481 E. Division St.	921-5676
Ripon Medical	933 Newbury S.	748-3101
Samaritan Free Health Clinic	327 N. Macy St.	926-4841
Sharpe Clinic	92 E. Division St.	921-0560
Waupun Memorial	620 W. Brown St	324-5581

SPORTS AND RECREATION

ACTIVITY CENTERS

Do-It-All Sports Arena	7799 Hwy 151 North	922-2255
Fondy Sports Complex	N5820 Hwy 151 South	923-6400
BMX Track	Adelaide Park	602-0652
FDL Skateboard Park	Adelaide Park	
Spectrum Roller Rink	605 Fond du Lac Ave.	923-5190

GOLF

Rolling Meadows Golf Course	Fond du Lac	929-3185
Auburn Bluffs	Campbellsport	533-4311
Autumn Ridge Golf Club	Valders	758-3333
Black Wolf Run	Kohler	800-344-2838
Badger Creek Golf Course	New Holstein	898-5760
Far Vu Golf Course	Oshkosh	231-2631
The Golf Club of Camelot	Lomira	269-4949
Lakeshore Golf Course	Oshkosh	235-6200
Mayville Golf Club	Mayville	387-2999
Oakgreen Golf Course	North Fond du Lac	922-2273
Rolling Meadows Golf Club	Fond du Lac	929-3735
South Hills Country Club	Fond du Lac	921-3636
Lawsonia Golf Course	Green Lake	294-3320
Thornbrook Golf Course	Fond du Lac	922-2722
Tuscumbia Country Club	Green Lake	294-3240
Utica Golf Course	Oshkosh	233-4446
Westhaven	Oshkosh	233-4640
Whispering Springs	Fond du Lac	921-8053
Whistling Straits	Sheboygan	800-344-2838

CITY OF FOND DU LAC PARKS

Adelaide Park: Three tennis courts, a baseball diamond and an eighteen station fitness trail.

Location: Northwest corner of Hickory and Arndt St

Buttermilk Creek Park: Sledding hill, four tennis courts, baseball diamonds, volleyball & basketball courts, eighteen station fitness trail and an outdoor performance stage.

Location: S. Park Ave.

Danbury Park: Two tennis courts, volleyball courts and a baseball diamond.

Location: Between Ashbury & Danbury Ave.

Fond du Lac Fairgrounds: Outdoor Aquatic Center, playground, sheltered picnic areas, public camper facilities, horseshoe pits, expo buildings and Family Ice Center.

Location: Between Fond du Lac Ave. and Martin Ave.

Franklin Park: Playground, basketball court and outdoor ice-skating rink.

Location: Military Rd. and 9th St.

Hamilton Park: Community Center and playground.

Location: Along East Hamilton Place.

Hucks Bellevue Park: Baseball diamond, basketball and volleyball courts and playground.

Location: Southgate Dr. and Hobbs Lane.

Jefferson Park: Playground area.

Location: Ninth St. and Sherman St.

Lakeside Park: Lighthouse, boating marina and harbor, canoe & paddle boat rentals, lagoon, playground equipment, baseball complex, pavilion and picnic facilities.

Location: North Main St. and N. Park Ave.

Lakeside Park West: Boat landing, picnic and fishing area.

Location: Hwy 45 North and Howard Litscher Dr.

Lallier Park: Playground and sheltered picnic area

Location: National Ave. and Fourth St.



McDermott Park: Four tennis courts, two baseball diamonds, volleyball courts, playground equipment and an outdoor ice-skating rink.

Location: Johnson St. and Coffman Ave.



McKinley Park: Basketball court, playground equipment and baseball diamond.

Location: Along Amory St. between Arndt St. and Follett St.

Playmore Park: Baseball diamond, volleyball court, playground equipment and an outdoor ice-skating rink.

Location: Division St. and Seymour St.

Franklin Russell Park: Three baseball diamonds.

Location: Second St. and Ashland Ave.

Catherine Whittier Lewis Park: Playground equipment and baseball diamond

Location: 240 E. Second St.

Taylor Park: Outdoor swimming pool, wading pool, four tennis courts and playground equipment.

Location: Hickory and Ruggles St

CITY OF NORTH FOND DU LAC PARKS

Lemieux Park: Basketball and volleyball courts, picnic shelter and playground equipment.

Location: Corner of North and Chapman St., North Fond du Lac

Municipal Swimming Pool: Outdoor swimming pool and wading pool.

Location: 125 McKinley St., North Fond du Lac

Village Park: Tennis courts, basketball and volleyball courts, baseball diamond and a pavilion.

Location: Winnebago St., North Fond du Lac

COUNTY PARKS AND WILDLIFE AREAS

Columbia Park: Campgrounds, boat landing, small craft mooring, playground equipment, pavilion and observation tower.

Location: Eastern shore of Lake Winnebago, at Pipe Village, just 10 miles northeast of Fond du Lac

Firemans Park: Concession stands, picnic areas, playground equipment, pavilion and tennis courts.

Location: Corner of Washington and Mt. Carmel St., Mt. Calvary

Kiekhaefer Park: Hiking, biking, sledding and cross country skiing trails.

Location: Hwy 151 N. to Keikhaefer Parkway



Oakfield Village Park: Three baseball diamonds, picnic area, picnic shelter with tables and playground equipment.

Location: Church St. adjacent to high school, Oakfield

Roosevelt Park: Picnic areas, beach, swimming and wind surfing.

Location: Highway 151 just north of Fond du Lac

Rosendale Park: Picnic areas , horseshoes, baseball diamonds and tennis courts.

Location: Southern end of Grant St. , Rosendale

Waupun County Park: Campgrounds, nature trails, playground equipment, picnic areas, swimming pool and baseball diamond.

Location: Along Cty Hwy MMM, just Northwest of the City of Waupun

Wolf Lake County Park: Public beach, picnic area, boat landing and playground equipment.

Location: Along Hwy 149, Town of Marshfield

WILDLIFE & HIKING

Horicon Marsh: Home to hundreds of varieties of birds and wildlife including redhead ducks and cattails. Many visit the area to witness the fall migration of Canadian geese. Offers hiking, bike and snowmobile trails.

Location: Along Hwy 49 bordering Dodge and Fond du Lac counties

Eldorado Marsh: Roughly 6000 acres of land known as the “Everglades of the North” offering hunting, canoeing, biking, cross country skiing, fishing and biking opportunities.

Location: Dyke Rd. off Cty Hwy I, just 5 miles West of Fond du Lac

Hobbs Woods: Nature trails, hiking trails and trout streams.

Location: South Hickory Rd., just 5 miles South of Fond du Lac

Kettle Moraine State Forest: Made up of geological formations caused by receding glaciers, the “kettles” include thousands of acres of land devoted to forestry and outdoor recreation, including camping, swimming, picnic areas, hiking, snowmobiling, cross country skiing and bridle trails.

Location: Hwy 67, just East of Hwy 45, Southeast of Fond du Lac

Wild Goose State Trail: Bicycling, walking, running and snowmobiling trails.

Location: Connects Oakfield Villager Park to Rolling Meadows Dr. just East of Golf Course in Fond du Lac



TRANSPORTATION

OTHER TRANSPORTATION SERVICES

Overnight Delivery (2001)

Airborne Express, Emery Worldwide, Express Mail, Federal Express, Lanter Courier, Dunham Express, Fond du Lac Express and United Parcel Service provide overnight delivery service for Fond du Lac County.

Bus Service

Nationwide Greyhound Service available in Waupun and Fond du Lac.

Statewide Service: M&M Goldstar, Discovery Coach Lines, Lamers Bus Lines, Nationwide Travelers

Local Transit

Fond du Lac Area Transit. Charters and rentals available. Information about new city bus routes is available at <http://www.ci.fond-du-lac.wi.us/transit/routes.html>

Taxi Service

City Taxi, Quality Cab, & Ben's Budget Cab offer service in Fond du Lac and North Fond du Lac.

Brown Cab offers service in Ripon.

Waupun Taxi and City Taxi offer service in Waupun.

Movers

ABF U-Pack Moving, Action Moving and Storage, Allied Can Lines, Fond du Lac County Movers, The Movers, United Van Lines, Mayflower, Schroeder Moving Systems, Dufrane Moving Co.

Foreign Trade Zone/Inland Port

A portion of the campus of Mercury Marine, a major manufacturer located in the City of Fond du Lac, is located (Subzone 41H) within a designated Milwaukee Foreign Trade Zone (No. 41).

*Two inland ports are accessible in Green Bay and Milwaukee.

AIR SERVICE TRANSPORTATION

Commercial Airport: General Mitchell International Airport, Milwaukee

Distance to: 75 minutes south via U.S. 41 and Interstate 94

Commercial Carriers: 17 major airlines offer daily nonstop or direct services to 85 U.S. cities

Commercial Airport: Dane County Regional Airport

Distance to: 75 minutes to the southeast via U.S. 151

Commercial Carriers: Northwest, United Express, Midwest Express, American Eagle (American), Trans World Express (TWA), Comair (Delta) and Skyway (Midwest Express), Continental Express, Chicago Express (ATA)

Runways: Runway 3/21 is 7,200 feet long and 150 feet wide. Runway 18/36 is currently being reconstructed.

Commercial Airport: Wittman Regional Airport, Oshkosh

Distance to: 20 minutes north via U.S. 41

Primary Runway 6166 ft.

Commercial Carriers: United Express

Commercial Airport: Outagamie County Airport, Appleton

Distance to: 45 minutes north

Commercial Carriers: United Express, Midwest Express, Skyway, Northwest, ComAir

Runways: 7000 ft. and 6800 ft.

Commercial Airport: O'Hare International Airport, Chicago

Distance to: 2.5 hours south via Highways 41 and 45 and Interstate 94.

Commercial carriers: Multiple carriers at North America's most active international airport.

General Aviation Airport: Fond du Lac County Airport, Fond du Lac

Runways with instrument approaches: Two asphalt-surfaced, lighted runways are available. North-South runway measures 5,960 ft. East-West runway measures 3,600 ft.

Services: Charters and freight service available. Fuel services available: Jet-A and 100-LL.

Private Air Facilities: Reabe Airport, Waupun

Runways: 3200 ft. paved two-runway system

RAIL SERVICE

Canadian National Railroad/Wisconsin Central LTD.

Serves: Campbellsport, Eden, Fond du Lac, North Fond du Lac.

Service area: North to Green Bay, Stevens Point, Rhinelander, Upper Michigan and Ontario, Canada. South to Milwaukee and Chicago which can also be nationwide connections. West to Minnesota. East to Lake Michigan Shoreline. East and West from Kimberly to New London. Piggyback service available.



Wisconsin & Southern Railroad Co.

Serves: Brandon, Ripon and Waupun. Service area: North from Ripon to Oshkosh. South from Ripon to Waupun. West to Beaver Dam and Fox Lake. East to areas north of Milwaukee. Switching available. Piggyback service obtainable in Ripon

HIGHWAY ACCESS AND TRUCKING

Fond du Lac County serves as a central location with excellent highway access equidistant to major markets in Green Bay, Madison and Milwaukee.

U.S. Highways 41, 45 and 151 are easily accessible. Hwy. 41 was upgraded to freeway status. Plans are underway to upgrade Hwy. 151 to multi-lane. Projects near Waupun should be completed by 2004. The section of Hwy. 151 between Thill Road and County D will be complete by 2005, and the section between County D and WIS 175 will be complete in 2007.

State Highways 23, 68, 67 and 103 provide east-west travel; 26, 44, 49, 149 and 175 provide north-south access.

Thirty-four trucking companies, including 5 heavy haulers and 2 milk transporters provide over-the-road transportation.

Note: Percentage of U.S. market within one-day delivery (500 miles) is approximately 12 percent based on 2000 population estimates in major markets in a 500-mile radius.

-- Compilation of population from U.S. Census



GEOGRAPHICAL POINTS OF INTEREST

HISTORIC GALLOWAY HOUSE AND VILLAGE WITH BLAKELY MUSEUM

336 Old Pioneer Road

Built in 1847, the 30 room Victorian mansion is accented with decorative woodwork, 4 fireplaces, and is surrounded by an authentic village with 23 buildings that depict lifestyles of the late 1880's. The Galloway Village also features the Blakely Museum. The museum contains hundreds of historical collections including the following: Pioneer and Native American artifacts, a gun display, and the Susan Colman Collection. Open to public from Memorial Day through Labor Day.

OCTAGON HOUSE

276 Linden St.

Featured on the History Channel and restored in Victorian antiquity, the eight-sided, 12-room home was built in 1856 by Issac Brown and is rumored to be haunted. The home later became a part of the Underground Railroad. It contains 9 passage-ways including hidden rooms and an underground tunnel. Tours are available.

ST. PAUL'S CATHEDRAL

51 W. Division St.

One of the finest woodcarving collections in the United States from Germany. An enormous organ along with fine sculpture and paintings highlight this 1880's Gothic-style cathedral. Tours are available.

PAINTED LADY MANSION

199 E. Division St.

Restored Queen Anne style home situated among one of the most charming architected neighborhoods in the Fond du Lac area. Tours are available.

MIRACLE MILE

South Main St.

South Main Street was crowned the Miracle Mile by the Midwest media when two major lottery wins were awarded in the 1990's. The largest prize was awarded in 1993 in an amount of \$111million. Many foreigners migrate each week to the various businesses along North Main in hopes of becoming the next big winner!

SILVER WHEEL MANOR DOLL MUSEUM

Contains an wide collection of dolls trains, antiques and carriages. The costume shop is quite extensive. Reservations are preferred.



WISCONSIN HOT SPOTS

FOND DU LAC TO:

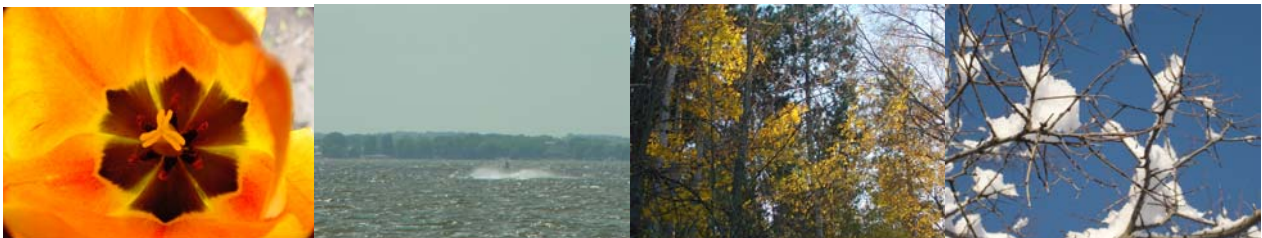
- 1. Appleton** **40 Miles** At the heart of the Valley, the Appleton area is one of the most rapid growing areas in the state and offers a wide variety of restaurants, shopping establishments, and places of entertainment. The Houdini museum on College Ave. is a recommended site to visit.
- 2. Door County** **138 Miles** Offering some of the most gorgeous scenery in the state, the peninsula county offers a host of lodging, quaint villages, harbors, and shopping interests. Come and enjoy the annual Cherry Festival and summertime fish boils.
- 3. Green Bay** **72 Miles** Home of the legendary Green Bay Packers and Packer Hall of Fame the Green Bay area is also home of the National Railroad Museum which displays over 50 steam locomotives, passenger cars, and freight cars. Don't forget to visit the NE Wisconsin State Zoo just outside the city limits!
- 4. Lacrosse** **159 Miles** As the largest Wisconsin city along the Mississippi, the area hosts Oktoberfest which has been listed by USA Today as one of the top 10 World Festivals. Home of the world's largest six-pack, Lacrosse is well known for the local breweries. The views of the river valley from atop the bluffs, notably Granddad bluff, are absolutely breathtaking
- 5. Madison** **65 Miles** As the home of Wisconsin's state capital building, Madison Art Center; University of WI-Madison, The Geology Museum, and The Elvehjem Museum the Madison area offers a one-of-a-kind variety of culture and entertainment. The Big 10 University academic and athletic offerings are outstanding and the Madison area continues to be heralded as one of the top places to live in the country.
- 6. Milwaukee** **57 Miles** Home of the Milwaukee Bucks and Milwaukee Brewers this metro area easily holds the largest population in the state, is surrounded by a variety of suburbs and culture, and is just north of Mitchell International Airport. Some of the more well-known employers in the area include Miller Brewing, Pabst Brewing, and Harley Davidson. A large outdoor park runs along the Lake Michigan shoreline and is a commonplace for a slew of year-round festivals including Summerfest and German Fest. Don't forget to visit the museums, theatres, Milwaukee Country Zoo and Botanical gardens!

7. Oshkosh 18 Miles The community of Oshkosh is home of the EAA Airport which annually hosts the EAA Air Show making the airport the busiest airport in the world summer after summer. Enjoy the Wright Brothers Exhibits, air shows, and numerous experimental aircrafts.

8. Wisconsin Dells 66 Miles The Dells area is home of the one of the Country's largest water parks including Noah's Ark, Family Land, and Riverview Park. Each water park offers massive water slides, various rides, play areas, and tons of family fun. Don't forget to catch the water skiing shows and duck-boat tours across the beautiful terrain of one of Wisconsin's favorite tourist attractions!

9. Kohler 36 Miles The belief in artistry is one of the great cross-generational ideas that have guided the Kohler family from the beginning. Nowhere is this more evident than in the beauty of the Village of Kohler itself. It is an amazing community of 1,900 people—home to a leading American corporation, a tourist destination and a quaint garden-like village. Because of careful planning, a far-reaching sense of quality and vision, the Village of Kohler offers much to residents and visitors alike. Come. Explore. Enjoy.

10. Elkhart Lake 26 Miles Home of Road America, one of the greatest race tracks in the world with track activity from April through October. Road America is a four-mile permanent road course with fourteen turns outlined by seven miles of access road on 626 acres of land. In addition to the original four-mile course, there is the Briggs & Stratton Motorplex. This .8 mile course with varying terrain and challenging turns (multiple configurations include an oval) challenges drivers in race-prepared karts and riders on Super Motards.





THE BENEFITS OF KLAPPERICH REAL ESTATE!

A FAMILY TRADITION

Klapperich Real Estate, a locally owned family business of over 25 years, is dedicated to treating your family like our very own. By treating every client and customer as if we had no others. By always putting your needs first. This commitment to a preeminent level of customer service has established Klapperich as a real estate consulting firm unlike no other.

FROM THE OWNERS

“Your real estate experience will be unlike any other at Klapperich. Our firm and sales associates take pride in exceeding your expectations and are dedicated toward reaching your specific real estate needs and goals. You will consider your Klapperich Agent to be an asset to your real estate investment.”

A TEAM APPROACH

Team based real estate firm consisting of the area’s top producing sales associates, with specific real estate credentials and specialties, dedicated to serving your real estate buying and selling needs.

REAL ESTATE BROKERAGE SERVICES

- Residential
- Condominium
- Lakefront
- Investment
- Multi-Family
- Land
- Commercial/Business

BUYING VALUE

The Klapperich Real Estate Buyer Brokerage System offers both traditional brokerage and Buyer Agency Representation. In addition to Multiple Listing Service properties, a Klapperich Buyer Agent can show you homes not yet on the market, For Sale by Owner properties, and homes under new construction.

SERVICE AREA

Fond du Lac, North Fond du Lac, Alto, Armstrong, Ashford, Blackwolf, Brandon, Byron, Calumetville, Campbellsport, Dotyville, Dundee, Eden, Eldorado, Fairwater, Johnsburg, Ladoga, Lamartine, Lomira, Malone, Marytown, Metomen, Mt. Calvary, Oakfield, Pipe, Rosendale, St. Cloud, Van Dyne, Waucousta, Waupun